

Monthly Operations Report for May 2026 at KLU

Operations			
	May 2026	May 2025	Year over Year Change
TRANSITION	43	28	53.6%
TOUCH & GO	105	65	61.5%
TAKEOFF	251	242	3.7%
LANDING	255	221	15.4%
GO AROUND	11	9	22.2%
FLYOVER	3	0	-
Totals	738	611	20.8%
<p>NOTE: FLYOVER and TRANSITION are excluded from the total operations count. Operations classified as TOUCH & GO and GO AROUND are counted as two distinct operations, a landing and a takeoff respectively.</p>			
Aircraft Type			
	May 2026	May 2025	Year over Year Change
Rotorcraft	16	0	-
Fixed wing single engine	682	575	18.6%
Fixed wing multi engine	28	21	33.3%
Unknown	12	15	-20.0%
Engine Type			
Turbo-shaft	16	0	-
Turbo-prop	15	6	150.0%
Turbo-fan	4	0	-
Reciprocating	653	562	16.2%
4 Cycle	38	28	35.7%
Unknown	12	15	-20.0%
Number of Engines			
1	682	575	18.6%
2	44	21	109.5%
Unknown	12	15	-20.0%
Average Daily Operations			
Monday	38	7	442.9%
Tuesday	32	18	77.8%
Wednesday	9	20	-55.0%
Thursday	14	37	-62.2%
Friday	48	21	128.6%
Saturday	36	28	28.6%

Monthly Operations Report for May 2026 at KKKU

Operations			
	May 2026	May 2025	Year over Year Change
Sunday	32	19	68.4%
Average per weekday	28	21	33.3%
Average per weekend	34	24	41.7%
Local vs. Transient			
Local	0	0	0.0%
Transient	738	611	20.8%
Nights Stayed	61	51	19.6%
Seats on Overnight Aircraft	270	202	33.7%
Overnight Visitors @ 50%	135	101	33.7%
Runways			
RWY 09 GO AROUNDs	6	4	50.0%
RWY 09 LANDINGS	64	59	8.5%
RWY 09 TAKEOFFs	59	69	-14.5%
RWY 09 TOUCH & GOs	42	36	16.7%
RWY 09 Total	171	168	1.8%
RWY 27 GO AROUNDs	16	14	14.3%
RWY 27 LANDINGS	191	162	17.9%
RWY 27 TAKEOFFs	192	173	11.0%
RWY 27 TOUCH & GOs	140	94	48.9%
RWY 27 Total	539	443	21.7%

Monthly Operations Report for May 2026 at KKKU

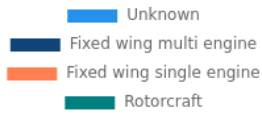
	May 2026	May 2025	Year over Year Change
Weight Class			
CLASS 1	704	591	19.1%
CLASS 2	6	5	20.0%
Unknown	28	15	86.7%
Jet Traffic			
Operations	4	0	-
Taking off Rwy 27	2	0	-
Landing Rwy 27	2	0	-
Largest aircraft	CIRRUS DESIGN CORP SF50 (A-I)		
Average seat count per jet	7	0	-

Most Active Aircraft				
Registration	Manufacturer	Model	Operations	Percentage of Total
N5307Q	CESSNA	150L	84	33.3%
N7843U	CESSNA	172F	53	21.0%
N8478U	CESSNA	172F	52	20.6%
N323FS	CESSNA	172P	39	15.5%
N62244	CESSNA	172P	26	10.3%
N7912U	CESSNA	172F	25	9.9%
N1310M	COLUMBIA AIRCRAFT MFG	LC41-550FG	20	7.9%
N4524Q	GULFSTREAM AMERICAN CORP	AA-5B	18	7.1%
99-26838	Sikorsky	UH-60L Black Hawk H60	16	6.3%
N2398X	CESSNA	182H	14	5.6%

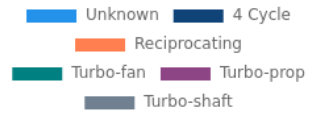
Most Active Owners		
Name	Operations	City
SKYWAY LEASING INC	84	LAKELAND
HARKRADER AVIATION LLC	53	LOUISA
RIG AVIATION LLC	52	TROY
CHRISTIANSEN AVIATION LLC	51	WILMINGTON
FREDERICKS HALL AVIATION LLC	39	MINERAL
SWEET BREEZE AVIATION LLC	25	GORDONSVILLE
KELLEY AIRCRAFT LLC	21	WEYERS CAVE
N1310M LLC	20	PALMYRA
PERRY BRIAN J	14	STUART
N61803 LLC	10	MANASSAS

Owner Locations		
City	Operations	Percentage of total
LOUISA	59	23.4%
TROY	53	21.0%
LAKELAND	53	21.0%
WILMINGTON	51	20.2%
MINERAL	36	14.3%

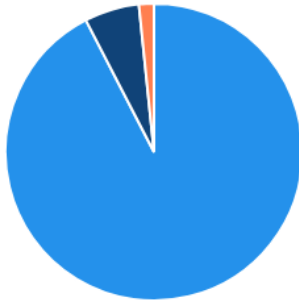
Aircraft Type



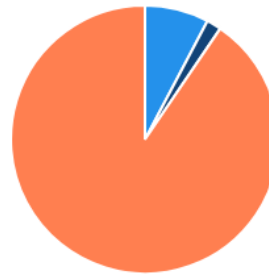
Engine Type



Number of Engines



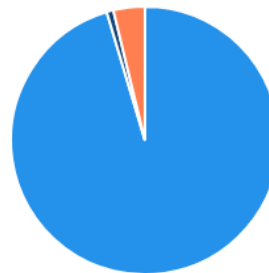
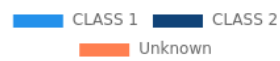
Weather



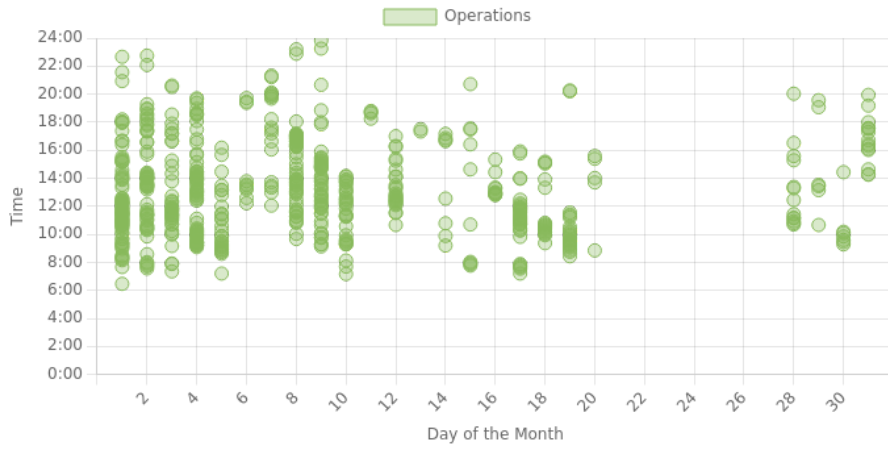
Local/Transient



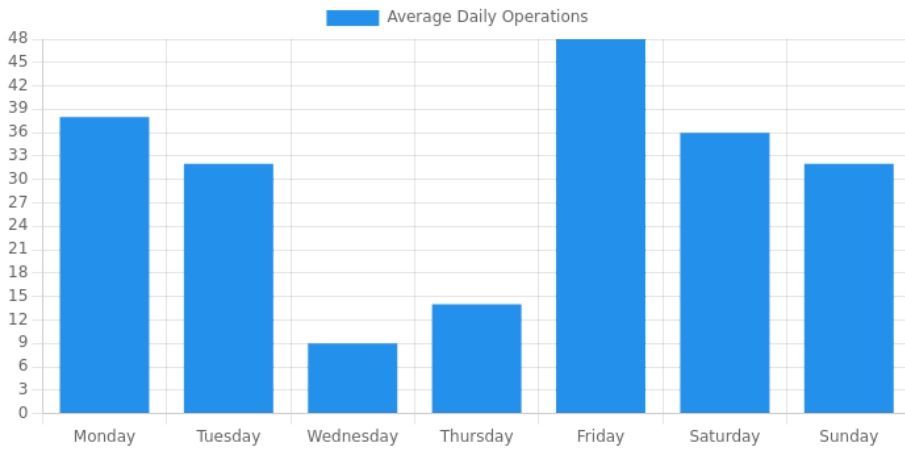
Weight Class



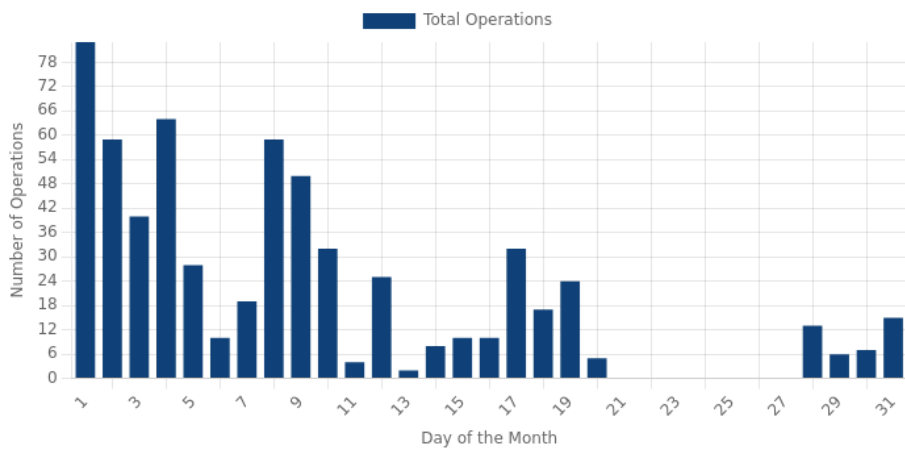
Time of Day



Day of the Week

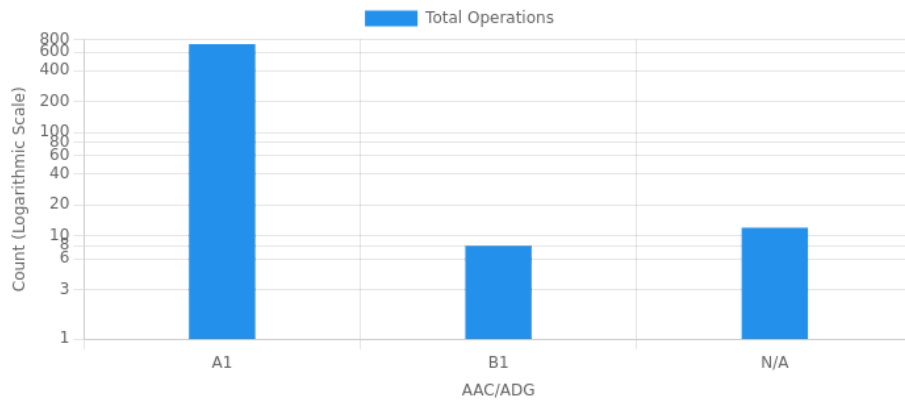


Daily Operations



Operations by AAC/ADG						
	I	II	III	IV	V	VI
A	718	0	0	0	0	0
B	8	0	0	0	0	0
C	0	0	0	0	0	0
D	0	0	0	0	0	0
E	0	0	0	0	0	0

AAC/ADG Distribution



Report generated by RunwayStats.com on June 1, 2026, 4:05pm CST